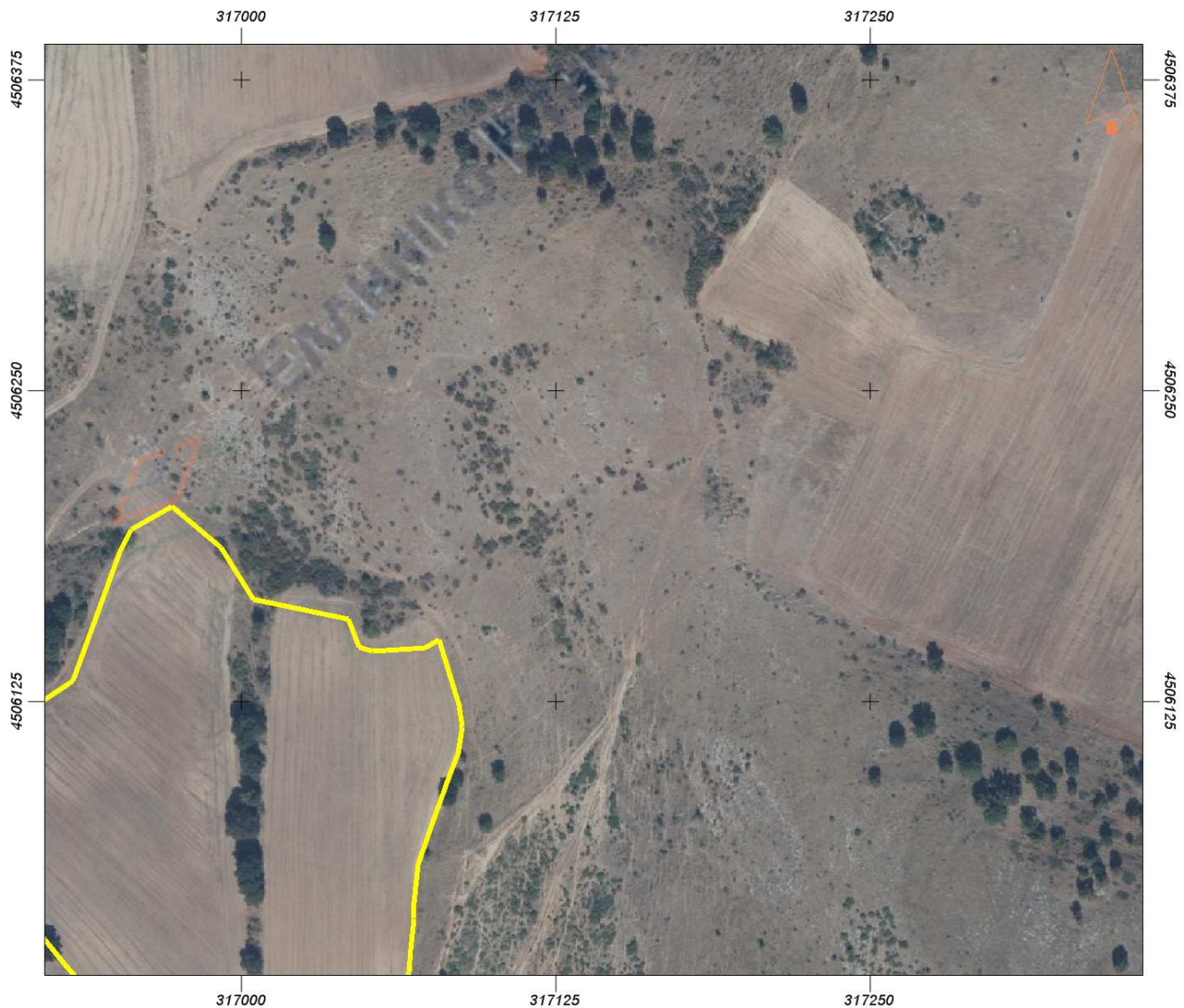




Εμβαδόν: 2312.02 τ.μ.

Ιδιότητα:		
A/A	X	Y
0	316991.93	4505804.57
1	316970.86	4505809.50
2	316970.15	4505832.42
3	316966.51	4505832.21
4	316966.51	4505836.81
5	316966.71	4505846.66
6	316966.61	4505850.89
7	316964.80	4505856.21
8	316964.80	4505856.21
9	316980.69	4505869.42
10	316987.29	4505874.90
11	316995.45	4505880.84
12	317002.05	4505883.39
13	317008.49	4505882.69
14	317011.89	4505878.73
15	317012.36	4505873.83
16	317002.02	4505837.95
17	317000.11	4505836.89
18	316999.93	4505834.17

19	316991.93	4505804.57
----	-----------	------------



Εμβαδόν: 35853.72 τ.μ.

Ιδιότητα:		
Α/Α	X	Y
0	317043.54	4505882.53
1	317024.25	4505878.14
2	317023.92	4505898.86
3	317023.92	4505909.95
4	317021.70	4505920.57
5	317018.31	4505923.72
6	317011.31	4505925.90
7	317003.41	4505930.64
8	316994.08	4505934.59
9	316985.07	4505937.90
10	316981.12	4505943.91
11	316971.48	4505953.07
12	316961.36	4505963.50
13	316958.83	4505968.71
14	316952.96	4505979.53
15	316950.74	4505989.48
16	316946.63	4506001.17
17	316945.21	4506002.44
18	316937.78	4506010.18

19	316930.67	4506018.23
20	316918.34	4506033.24
21	316903.32	4506046.74
22	316900.65	4506049.77
23	316903.28	4506051.19
24	316895.04	4506059.67
25	316867.20	4506058.31
26	316852.20	4506070.57
27	316885.13	4506101.13
28	316933.23	4506133.09
29	316951.77	4506184.84
30	316956.41	4506193.85
31	316972.53	4506203.30
32	316992.20	4506186.83
33	317005.09	4506166.00
34	317042.74	4506157.83
35	317046.86	4506146.70
36	317052.23	4506144.99
37	317073.18	4506146.40
38	317078.72	4506149.64
39	317086.72	4506123.66
40	317087.97	4506114.57
41	317086.18	4506104.13
42	317082.90	4506095.29
43	317075.94	4506075.97
44	317070.57	4506059.28
45	317068.68	4506044.04
46	317068.68	4506037.58
47	317067.59	4506025.26
48	317065.79	4506003.17
49	317065.10	4505990.35
50	317062.02	4505988.66
51	317056.25	4505982.80
52	317051.28	4505973.95
53	317050.19	4505961.19
54	317049.00	4505949.38
55	317048.69	4505922.30
56	317048.10	4505905.31
57	317043.54	4505882.53